



# CUSTOM STEEL STEPS

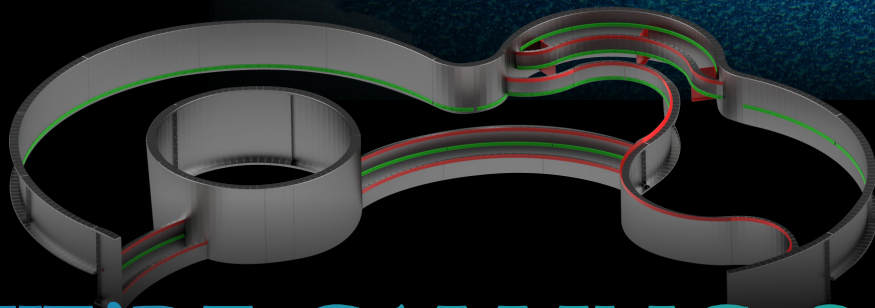
Any pool manufacturer can make walls, standard steps, braces, accessories...  
but how many can make your pool entry a truly breathtaking

*experience?*

*First and lasting impressions are everything;* this extends to how you and your guests enter, exit, and lounge in your pool. Not only can entryways and lounging areas upgrade the visual aesthetic of your pool's design, but it can be the difference in how comfortable you and your guests feel entering, leaving, and relaxing in your piece of paradise.

*You could* choose a standard cookie-cutter step.  
*You could* take the easy route and install ladders.

*Or, you could open your mind and let your ideas run wild with the possibilities of a truly unique, one-of-a-kind step system that will take your pool to the next level.*



## WE'RE CALLING ON ALL THE DREAMERS

to express their vision and most creative designs; and we'll handle the rest.

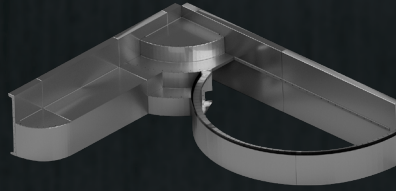


# MANUFACTURING RELIABLE STRUCTURES

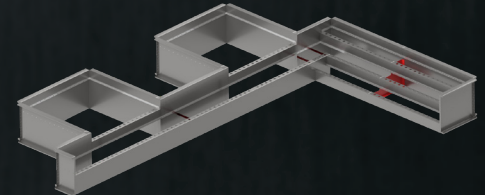
## *SINCE 1976*

- All Cardinal Custom Steel Steps are manufactured with G235 Galvanized steel, or ZAM corrosion-resistant steel
- All steps can be designed and created in solid steel or open-pour based on installation preferences
- Manufacturing and design goes beyond steps: *think sundecks, benches, lounges, and ramps*
- All steps include aluminum liner track for ease of liner installation. Aluminum is sturdy against the elements and does not crack, fade, or deteriorate like plastics used by competitors
- Standard PVC screed edging *with an upgrade option of powder coated steel screed edging*
- Available in 3-5 tread *depending on wall height*
- All entryways are designed to flow with the size and shape of your pool for easy installation on the job site

## CUSTOM IS THE *CARDINAL WAY*



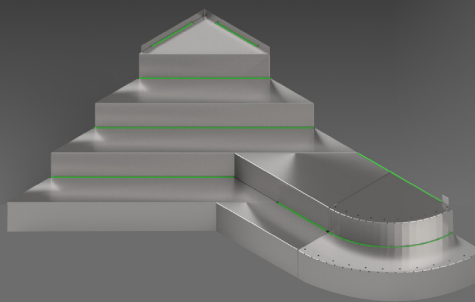
Steps and Entries can be designed in ***any shape, any width, any height*** to satisfy your style preferences and functionality needs of your pool. We invite the challenge of completely unique designs.



Our manufacturing capabilities allow us to ***punch essentially any desired openings*** into the step for Returns, Blowoffs, Lights, etc.

*Manufacturing technology follows precise and calculated measurements to produce steps with perfect angles or curvature that vinyl liners will lay tight against for an elegant finish.*

## EXCEEDING EXPECTATIONS



Our highly-skilled Engineers and CAD Department work together to bring ideas to life using advanced software to generate a drawing of your step/entry in 1-2 business days.

***Within 2 weeks***, your dream step will be right in front of your eyes ready for seamless installation.

**STEP INTO** *Paradise*

with jaw-dropping custom entryways by Cardinal that will

ELEVATE THE **LUXURY**  
of your pool experience.