



THERMOPLASTIC STEPS

PRODUCT GUIDE



Quaker Plastics

Quaker Plastics, a brand within Cardinal, provides a wide range of thermoformed products to the swimming pool and construction industries, including a variety of Quaker Steps. With the resurgence of mid-century modern trends particularly in architectural and interior design, the popularity (and affordability) of a thermoplastic step is becoming increasingly intriguing again to today's homeowner. Our steps are unmatched for strength, durability, and aesthetic, and are easy to install on-site.





Our gasket blends with the stair and liner edge for a beautiful, color matched installation. The pre-punched gasket means an easier, quicker installation and assures that no gasket material will be wedged into the screw hole and cause leakage for a beautiful, color matched installation.

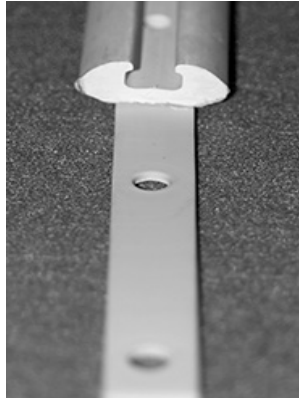


The Quaker Step easily adapts to all swimming pools. Our unique Deadend Block design helps ensure watertight installation. A permanent, solid plastic Deadend Block is securely bonded at the factory. This block totally encapsulates all screws, assuring a non-leak installation.

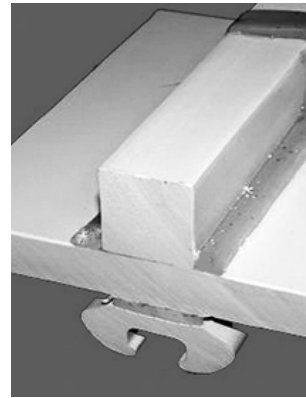


The trim strip, used to conceal the screws, is made from color matched, flexible plastic material. It can be easily pressed into the holding track and easily removed.

Our patented radius corner stair mount face plate is rounded at each bottom corner, attaching with the side face plates for a truly professional look. Smooth corners mean no sharp edges inside the pool, eliminating a possible hazard during liner installation and providing added protection for pool users. When a liner replacement is necessary, face plate screws are easily removed.



The back of the smooth, radius corner Stair Mount Face has been designed with ridges and grooves to ensure a leak-tight seal between the stair gasket and liner. This engineered, leak-tight system has been proven in over 250,000 installations.



QUAKER STEPS

Our thermoplastic stairs are flexible, strong, and built to withstand the elements. Not only is the strength built into the stair itself, every stair has a support system which is also set in concrete. The stairs are vacuum-formed from a single piece of ABS. Many shapes and styles are available in our Quaker Step Line, including contour, cantilever, in-wall ladder, leisure bench and corner.

All steps are white with select models available in solid gray.



Ridg-A-Dizing Channels

All-plastic channels are permanently bonded to the underside of each tread, providing controlled flexibility. These patented, heavy-duty, extra-wide channels mean optimum strength while still allowing the stairs enough flexibility to withstand freezing and thawing.

Maximum Strength Matched by None

The strength and rigidity of Quaker's stair had been proven with a 5,000 lb. stress test!

Lock Down Bleacher System

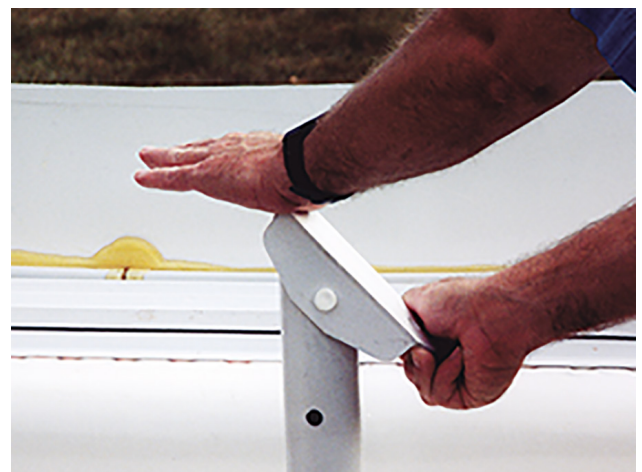
FAST • EASY • SIMPLE

The entire Lock Down Bleacher System™ is preassembled at the factory so there are no lost nuts or bolts. Stair support posts simply snap down and lock into place.

The molded bottom shoes easily flip to the horizontal position and the stair is ready for installation. Precision-engineered leveling support posts and bottom shoes are permanently hinged at the factory to the Ridg-A-Dized support channel, strategically located under each tread.

Leveling and support posts, along with the support shoes, are pre-drill for rebar. Install rebar through holes, cover with concrete, and stair is ready for final leveling before concrete hardens. No blocks, no nuts or bolts, no make-shift leveling/support methods, no costly labor or materials.

Result: Level stairs with bleacher-type stability, strength, and support.



AVAILABLE WHITE MODELS

Choose from one of our step models for a unique entrance that fits your style, and function of your pool.



QP-0004S
4' 3-tread Straight



QP-0064S
6' 4-tread Straight



QP-0064SC
6' 4-tread Straight Cantilever



QP-0064R
6' 4-tread Radius



QP-0084TS
8' 4-tread Twin Seat/Step Straight



QP-0084TSR
8' 4-tread Twin Seat/Step Radius



QP-0084TSC

8' 4-tread Twin Seat/Step Straight Cantilever



QP-0084TRC

8' 4-tread Twin Seat/Step Radius Cantilever



QP-4063C42

6' 3-tread 90° Corner
Twin Seat/Step Cantilever



QP-0006IWS

6' In-wall Seat



QP-0085TS

8' 5-tread Twin Seat/Step
Straight, 48" Wall Height



QP-1000NR

In-pool Ladder, Without Rails

ALSO AVAILABLE:

QP-0064RC

6 ft. 4-tread Radius Cantilever

QP-0085TR

8 ft. 5-tread Twin Seat/Step
Radius 48" High

QP-0085TRC

8 ft. 5-tread Twin Seat/Step
Radius Cantilever 48" High

QP-0085TSC

8 ft. 5-tread Twin Seat/Step
Straight Cantilever 48" High

QP-4063C48

90 Degree 3-tread Corner Twin
Seat/Step Cantilever 48" High

AVAILABLE GRAY MODELS



QP-0084TSCG

8' 4-tread Twin Seat/Step Straight Cantilever



QP-4063C42G

6' 3-tread 90° Corner Twin Seat/Step Cantilever



QP-0064SCG

6' 4-tread Straight Cantilever



QP-0084TRCG

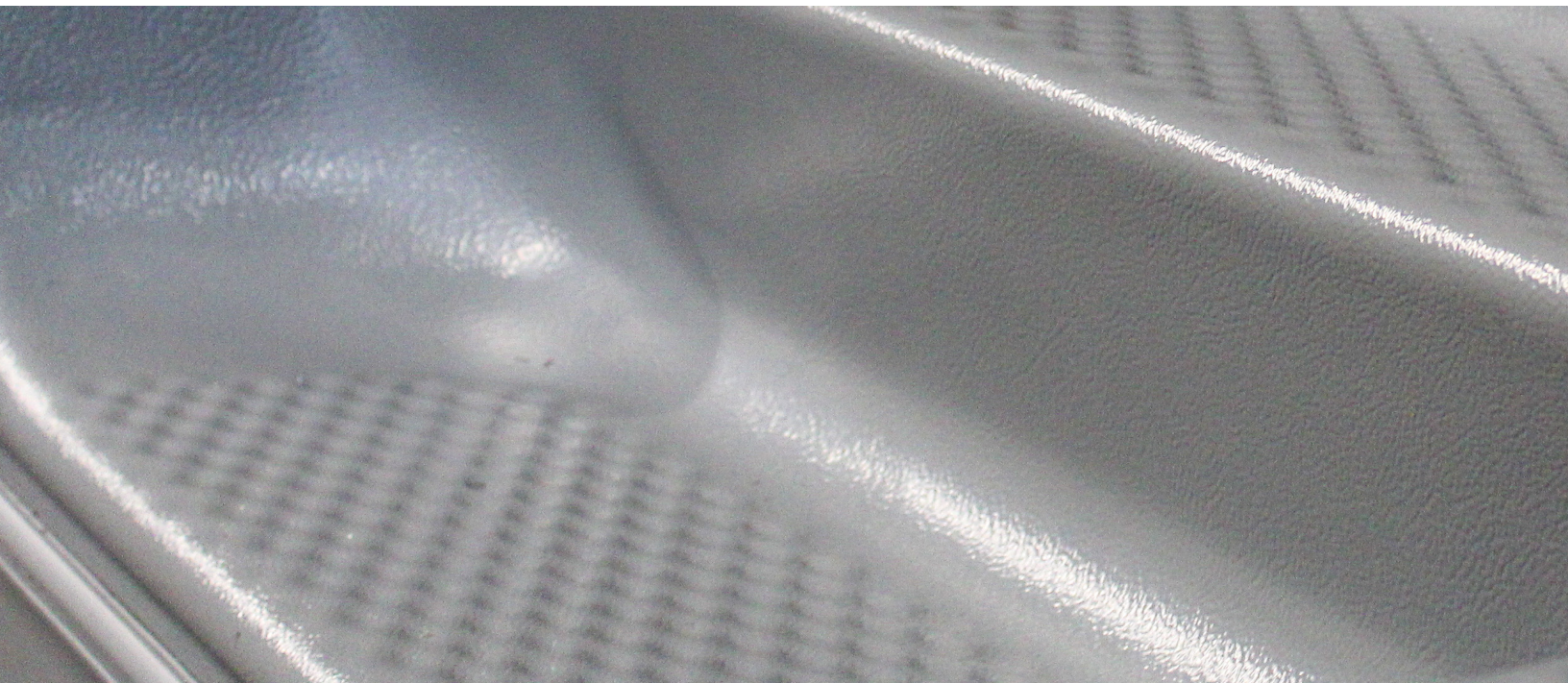
8' 4-tread Twin Seat/Step
Radius Cantilever



QP-1000NRG

In-pool Ladder, Without Rails

Photographs may not be representative of color. Actual stair color may vary from photograph.



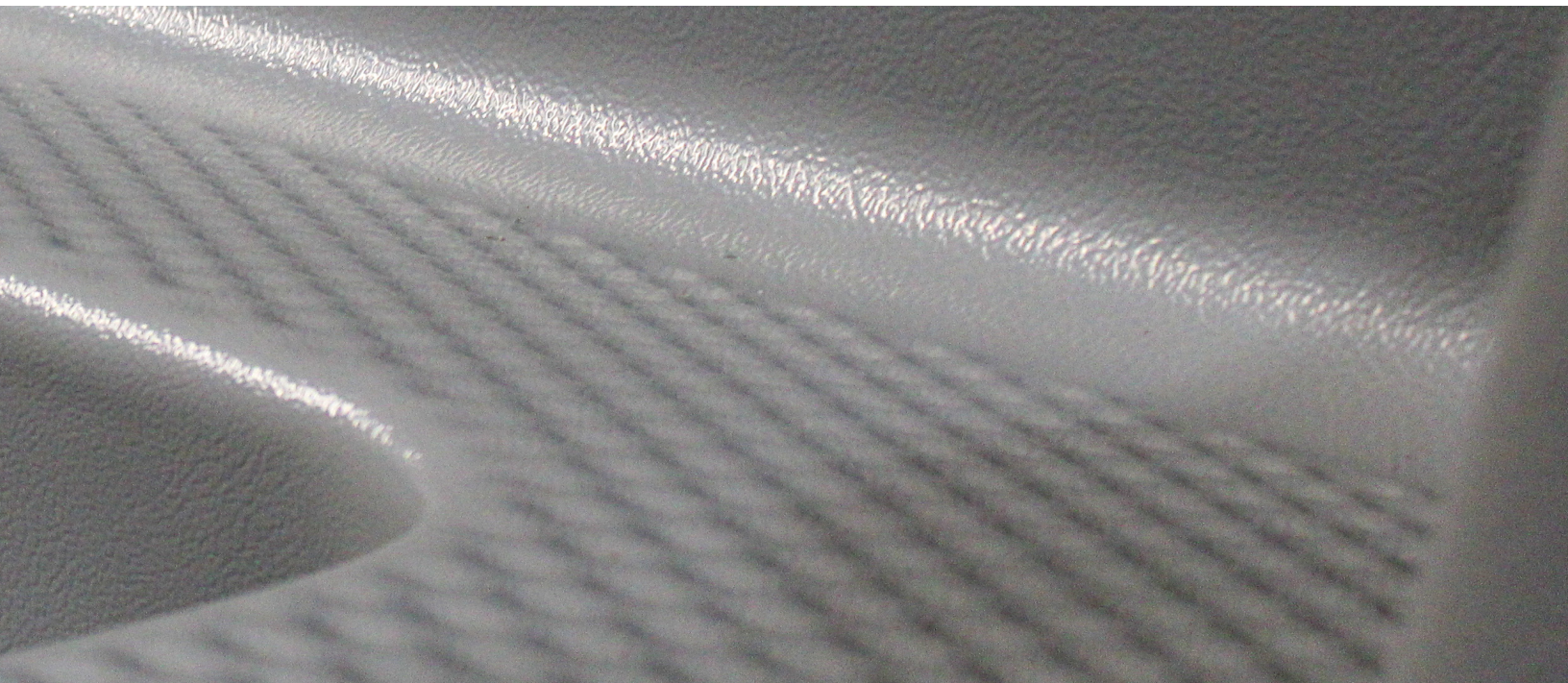
Neutral Pool Trends

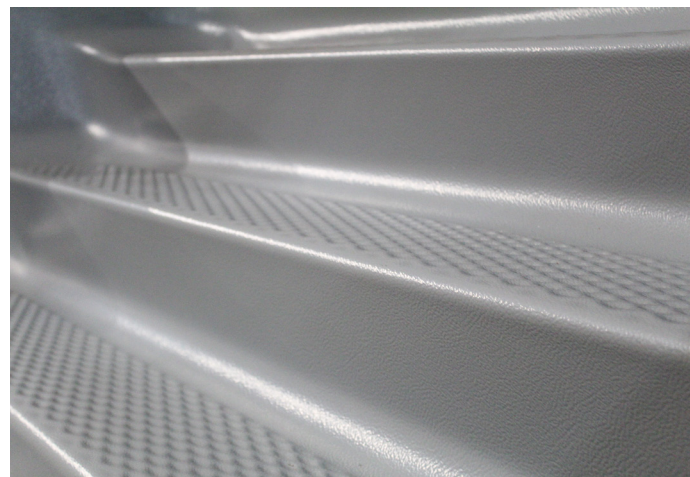
Trending nationwide, the use of muted grays and neutral colors as an additional option to the classic white Thermoplastic Steps seems to be a growing desire aesthetically for Homeowners.

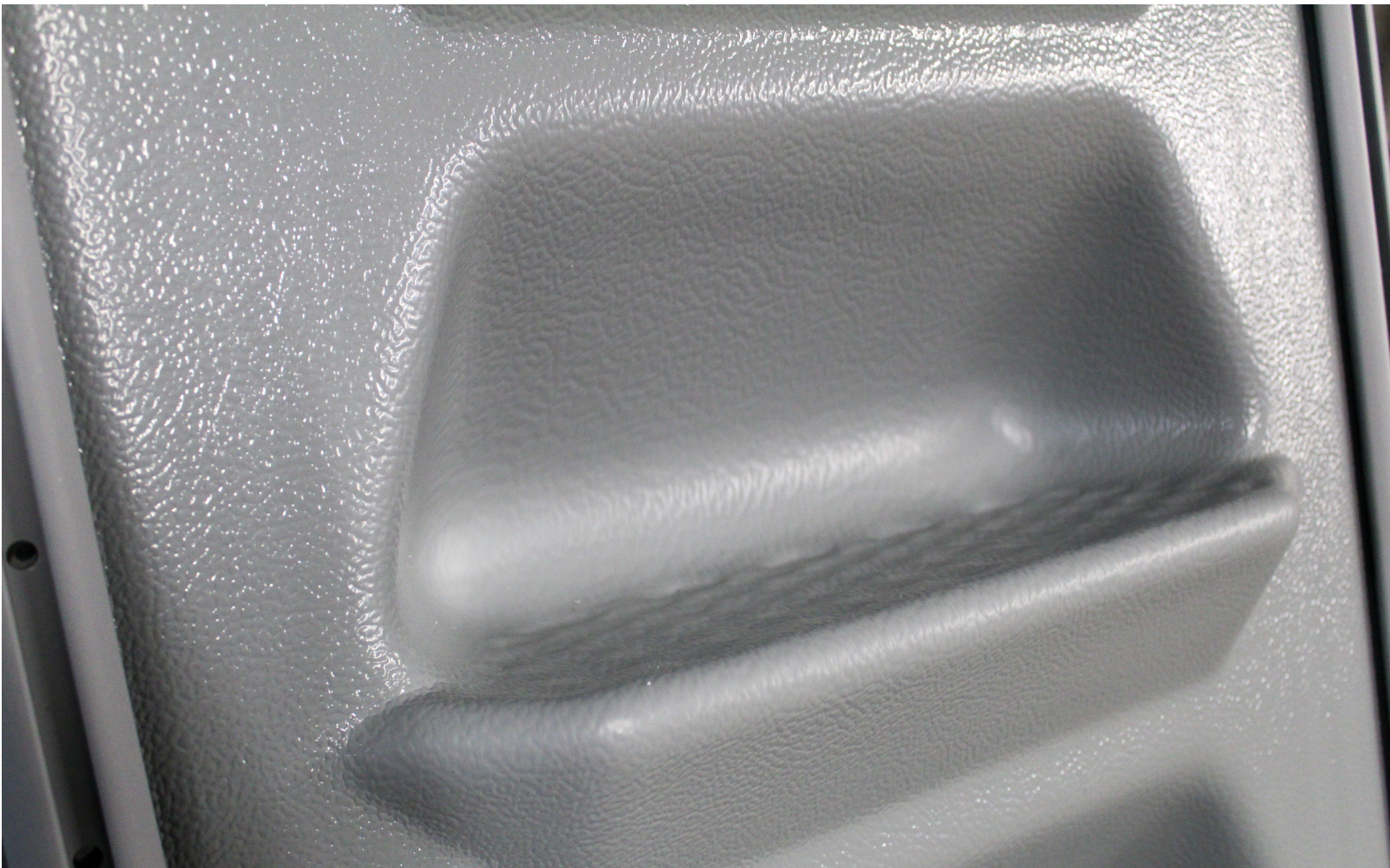
Our Solid Gray color option will match well with our solid gray coping, liner bead, darker liner patterns, and additional features offered by Cardinal to complete a pool with a sleek design.

THE BENEFITS

- Resistance to fading
(better UV protection in the mold to hold up against years of sun exposure.)
- Simple maintenance/repair
(steps are repaired quickly without losing appearance or color.)
- Material used can be recycled and reused in new models for a more environmentally friendly product
- Stronger bonds during forming
- TLC Corners
(hole prevention during liner installation.)









QUAKER PLASTICS - A Cardinal Brand | 250 Route 61 South, Schuylkill Haven, PA 17972
570.385.4733 | customerservice@cardinalsystemsinc.com | cardinalpools.com

CS-THERMOSTEP © 2023 Cardinal Systems, Inc.