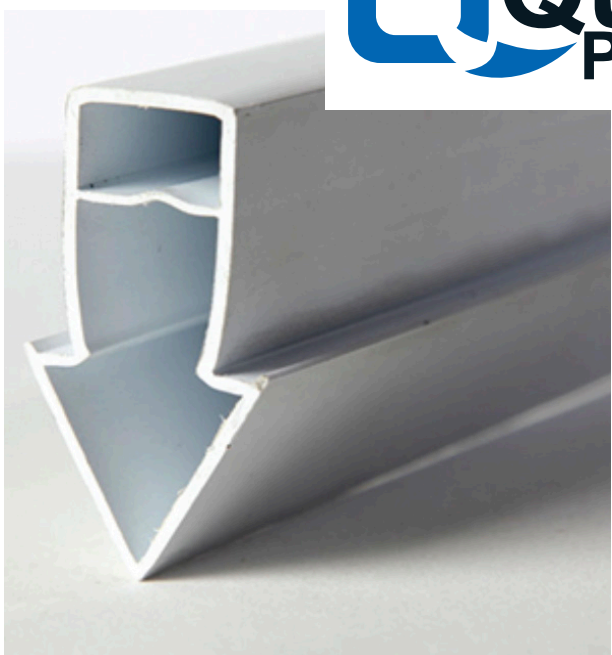




CONCEPTS IN PLASTICS

Quaker Plastics provides a wide range of products to the swimming pool and construction industries: pool steps, deck and paver drains, liner locks and control joints help to provide a complete offering for backyards and patios. Quaker also produces specialty items for industrial and consumer products.

Our trusted reputation to provide engineering solutions is backed by a proven and high-quality product line produced with our state-of-the-art manufacturing processes.



DECK/PAVER DRAINS

Made of all-weather, rigid PVC and available in several designer colors, our drains can match your landscape needs for color and function. The drains are constructed with a concave top for superior drainage and minimal debris collection. Our design provides for less clogging, and for handling more water volume than comparably sized competitive drains. The deck drains can be mounted flush against the wall, and are ready to install with tops and base assembled, screws, connections, protective tape, and instruction sheet included in the packaging.

CONTROL JOINT/ACCENT STRIP

Control Joint: Our patented Arrowhead™ Control Joint has a unique arrow-shape that presses into concrete with no channels to obstruct installation. The joint locks into concrete, allowing minimal water seepage. Double-layer, peel-off tape protects the top during installation. Available in designer colors to match the latest in decking treatments.

Extension Base: The patented Arrowhead™ Control Joint Extension Base is used when a full expansion, as well as contractual joint, is needed. Simply snap the base to our Arrowhead™ Control Joint to meet this requirement.

Accent Strip: Our trademarked Arrowhead™ Accent Strip is ideal for providing a decorative trim or pattern in poured concrete where an expansion joint is not needed. Double-layer, peel-off tape protects surface during installation. Available in colors to match the latest in decking treatments.

DISCHARGE HOSE

Quaker Plastics boasts the highest-quality vinyl discharge hose in the industry – 20% thicker than competitors. The hose is available in various sizes and lengths for both the pro and the homeowner. Convenient spools are ideal for the trucks of Installers and Service Professionals. Smaller rolls, which include a stainless steel clamp, are shrink-wrapped for best shelf visibility and easier handling.

ACCESSORIES & RENOVATION PRODUCTS

We offer an accessory product line for additional needs specific to the pool industry. In addition, we offer an array of products for repair and up-sell during renovation projects.

COLOR GUIDE

COLOR GUIDE FOR DECK DRAINS AND CONCRETE PRODUCTS



PAVER GRAY

(for paver drain and paver overlay only)



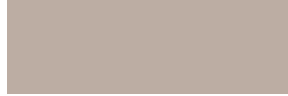
GRAY

(for all stock products except pavers)



WHITE

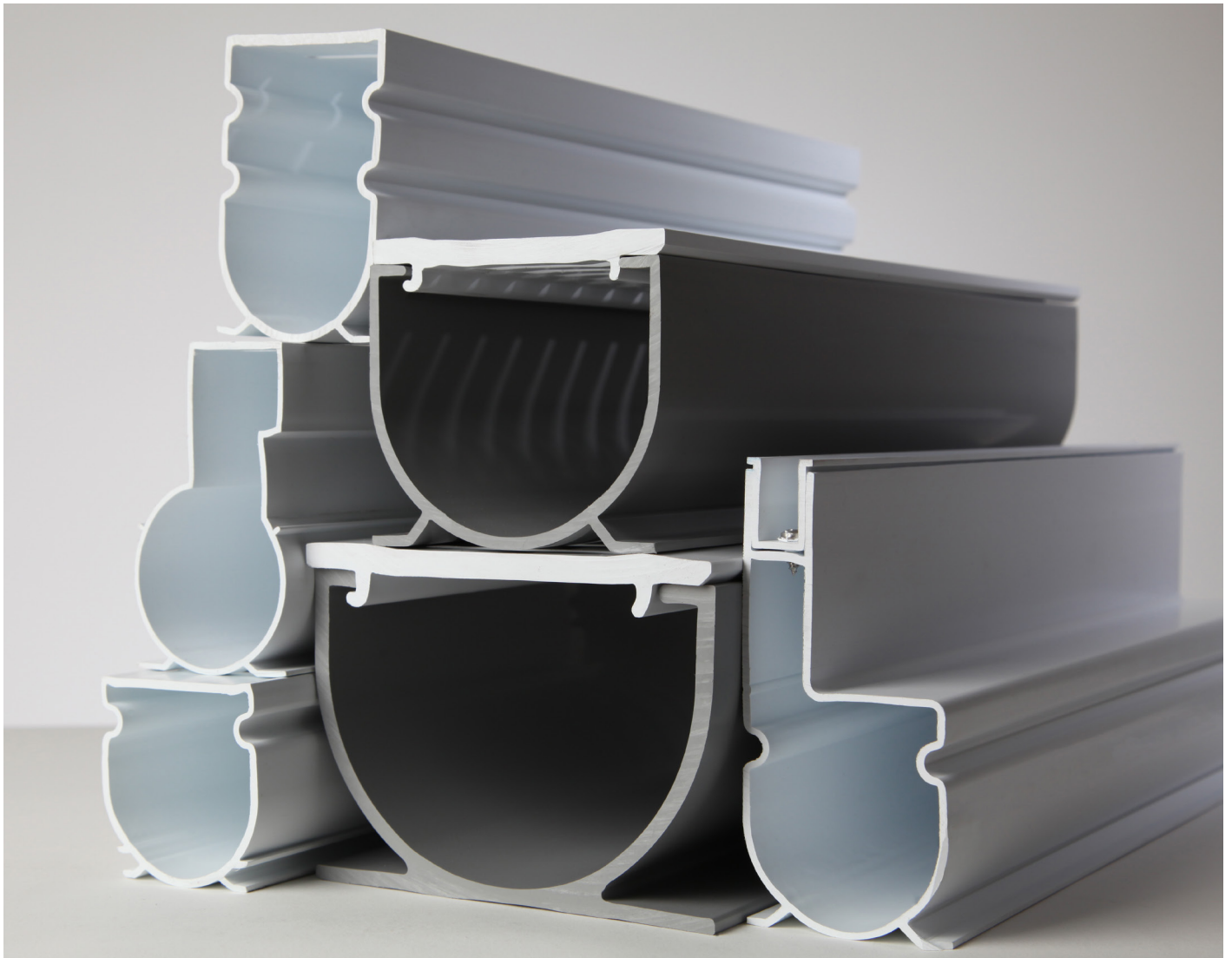
The color representations have been printed as closely as possible to actual colors, however, product color may vary from photograph.



TAN

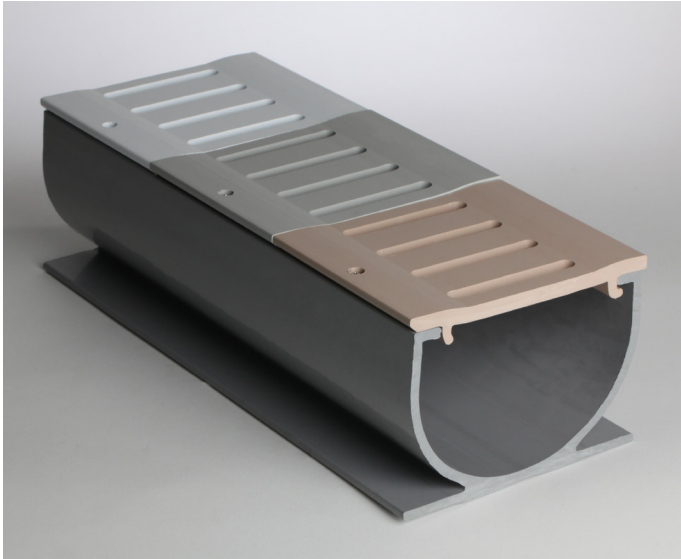
THE FOLLOWING QUAKER PRODUCTS ARE AVAILABLE IN THE COLORS TO THE LEFT:

- 3" Water Hog® Deck Drain and Fittings
- 4" Water Hog® Deck Drain and Fittings
- 2" Paver Drain and Fittings
- 1" Paver Overlay
- 2" Square Drain System and Fittings
- Deck Drain-A-Way® and Fittings
- Streamline and Fittings
- Arrowhead™ Control Joint
- Arrowhead™ Accent Strip
- Replacement Caps

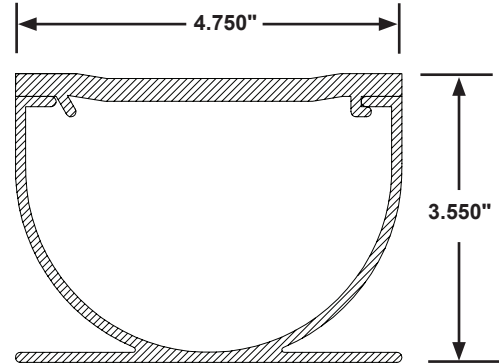


DECK DRAINS

QP-6251: 4" WATER HOG®



4" DECK DRAIN SYSTEM WITH GRAY BASE

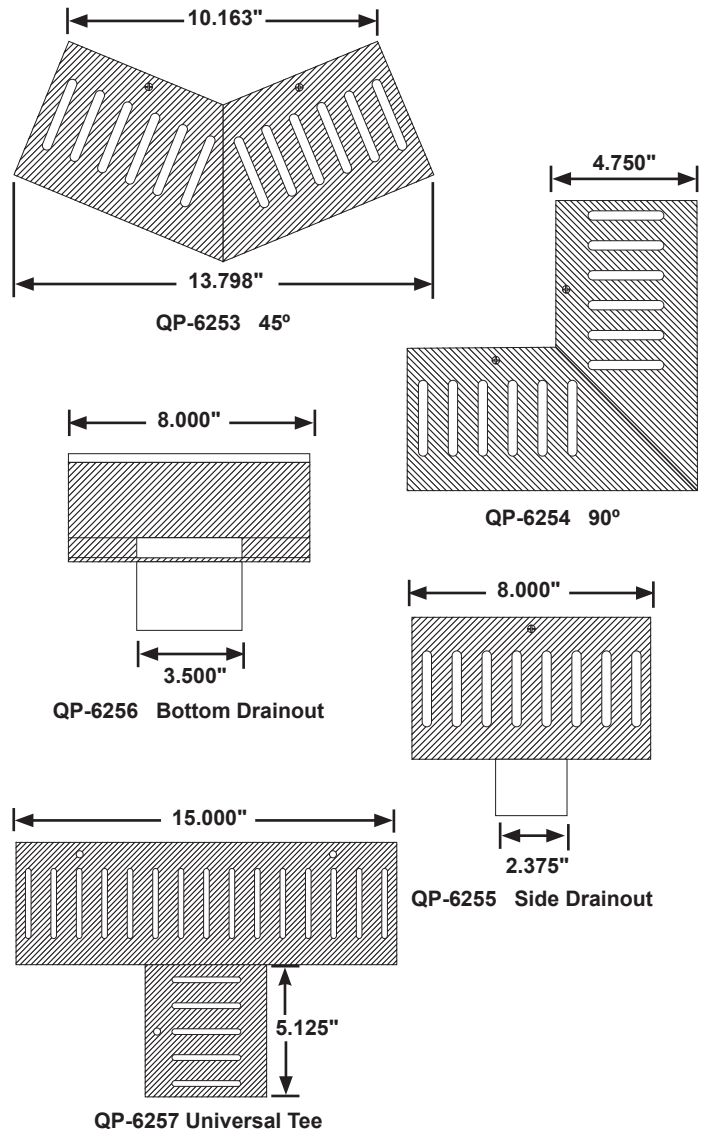


4" WATER HOG® FITTINGS

FITTINGS FOR 4" DECK DRAIN SYSTEM FIT ITEM #: QP-6251 AND QP-6252

4" WATER HOG® MODEL NUMBERS		
<i>Available Colors: white, gray, and tan (W,G,T)</i>		
ITEM NO.	LENGTH	PACKAGING
QP-6251 (W,G,T)	6 ft.	24 ft./case, four 6-foot pcs.
QP-6252 (W,G,T)	10 ft.	40 ft./case, four 10-foot pcs.

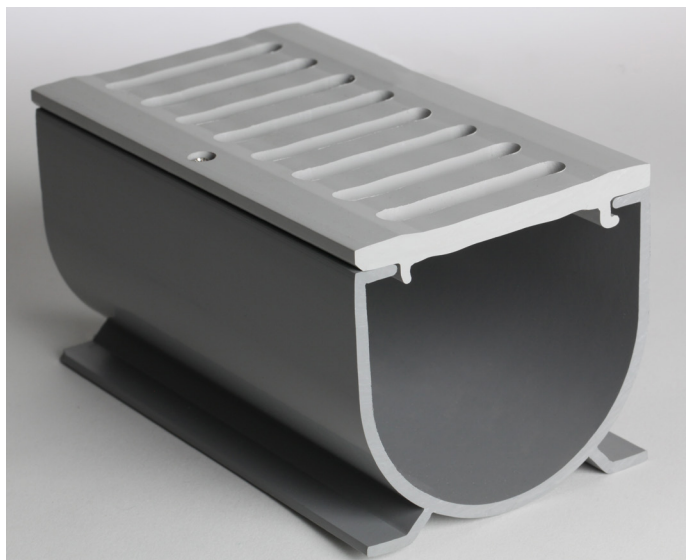
Case includes four connectors, one extra screw packet, protective tape, and one instruction sheet. 6 ft. is able to ship UPS, 10 ft. is not.



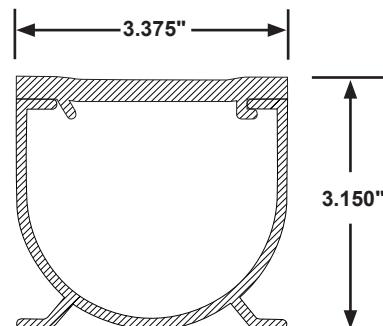
4" WATER HOG® FITTINGS		
<i>Available Colors: white, gray, and tan (W,G,T)</i>		
ITEM NO.	STYLE FITTING	PER CASE
QP-6253 (W,G,T)	45°	1
QP-6254 (W,G,T)	90°	1
QP-6255 (W,G,T)	Side Drainout	1
QP-6256 (W,G,T)	Bottom Drainout	1
QP-6257 (W,G,T)	Universal Tee	1
QP-4951 (W,G,T)	4" Drain Tops only, 6' length	8
QP-4973	Connector (gray only)	1
QP-496A	End Plug/End Adapter Kit	1 ea.
QP-496B	End Adapter (gray fitting, white base plate)	1
QP-496C	End Plug (gray fitting, white base plate)	1

DECK DRAINS

QP-6241: 3" WATER HOG®

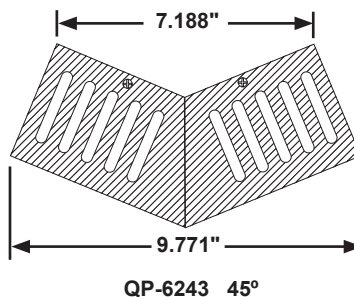


3" DECK DRAIN SYSTEM WITH GRAY BASE

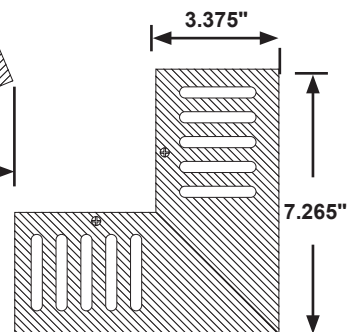


3" WATER HOG® FITTINGS

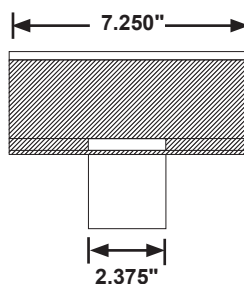
FITTINGS FOR 3" DECK DRAIN SYSTEM FIT ITEM #: QP-6241 AND QP-6242



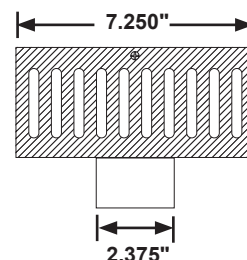
QP-6243 45°



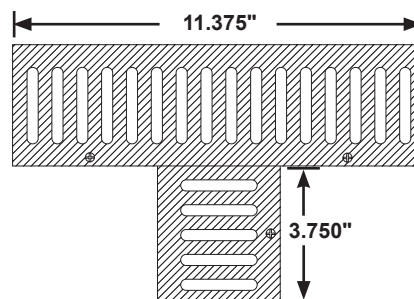
QP-6244 90°



QP-6247 BOTTOM DRAINOUT



QP-6248 SIDE DRAINOUT



QP-6245 UNIVERSAL TEE

3" WATER HOG® MODEL NUMBERS

Available Colors: white, gray, and tan (W,G,T)

ITEM NO.	LENGTH	PACKAGING
QP-6241 (W,G,T)	6 ft.	48 ft./case, eight 6-foot pcs.
QP-6242 (W,G,T)	10 ft.	60 ft./case, six 10-foot pcs.
QP-6241 (W,G,T) - 4	6 ft.	24 ft./case, four 6-foot pcs.

Case includes connectors (8 pcs. in 6-ft. case, 6 pcs. in 10-ft. case), one extra screw packet, protective tape, and one instruction sheet. 6 ft. is able to ship UPS, 10 ft. is not.

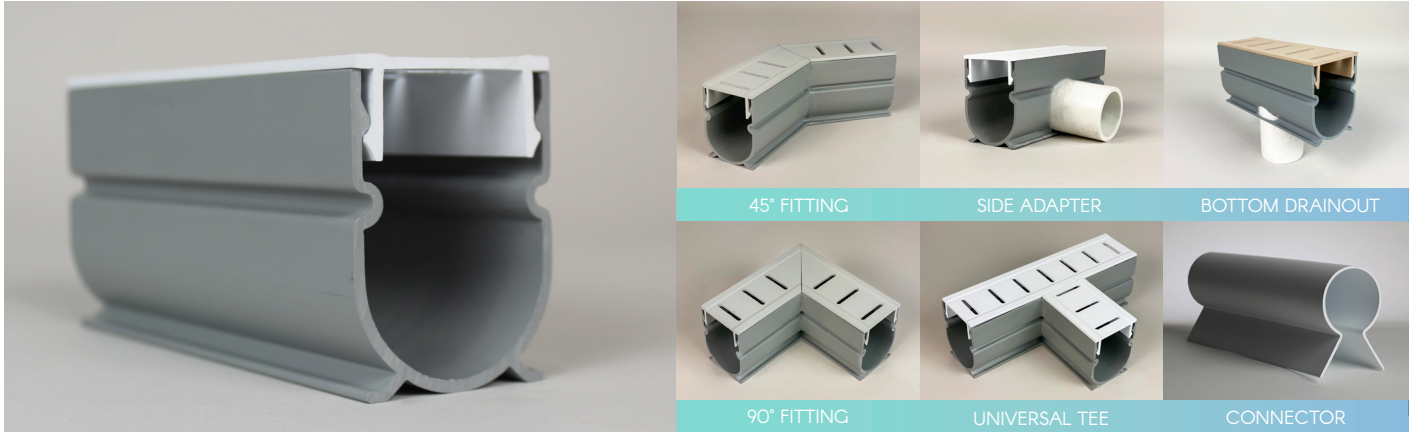
3" WATER HOG® FITTINGS

Available Colors: white, gray, and tan (W,G,T)

ITEM NO.	STYLE FITTING	PER CASE
QP-6243 (W,G,T)	45°	2
QP-6244 (W,G,T)	90°	2
QP-6245 (W,G,T)	Universal Tee	2
QP-6247 (W,G,T)	Bottom Drainout	2
QP-6248 (W,G,T)	Side Drainout	2
QP-5701 (W,G,T)	3" Drain Tops only, 6' length	8
QP-5712	Connector (gray only)	1
QP-572A	End Adapter (gray fitting, white base plate)	1
QP-572B	End Plug (gray fitting, white base plate)	1
QP-572C	End Plug/End Adapter Kit	1 ea.

DECK DRAINS

QP-6972: 2" REMOVABLE TOP DECK DRAIN



2" REMOVABLE TOP DRAIN MODEL NUMBERS

Available Colors: white, gray, and tan (W,G,T)

ITEM NO.	LENGTH	PACKAGING
QP-6972W	10 ft.	80 ft./case, eight 10-foot pcs.
QP-6972G	10 ft.	80 ft./case, eight 10-foot pcs.
QP-6972T	10 ft.	80 ft./case, eight 10-foot pcs.
Includes four adapters in a box of eight.		

2" REMOVABLE TOP DRAIN FITTINGS

Available Colors: white, gray, and tan (W,G,T)

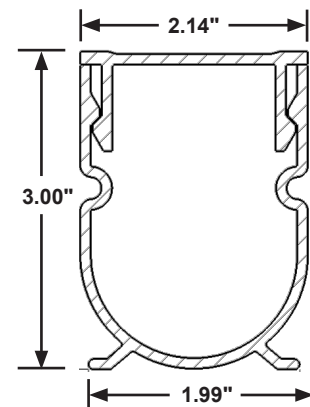
ITEM NO.	STYLE FITTING	PER CASE
QP-6973 (W,G,T)	45°	2
QP-6974 (W,G,T)	90°	2
QP-6978 (W,G,T)	Side Adapter	2
QP-6977 (W,G,T)	Bottom Drainout	2
QP-6975 (W,G,T)	Universal Tee	2
QP-6976*	End Cap	4
QP-6979*	End Drain Out	1 pc.
QP-0641	Connectors	1 pc.

*Available in WHITE ONLY

Not shown: End Cap (QP-5181-1 & 5182-1).

BENEFITS OF 2" REMOVABLE TOP DECK DRAIN SYSTEM

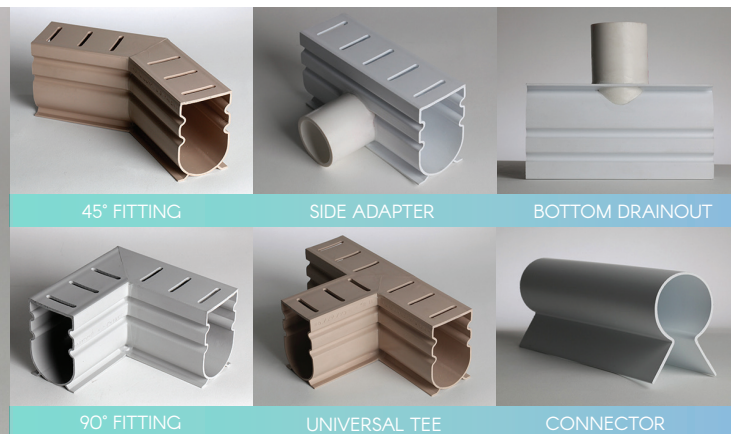
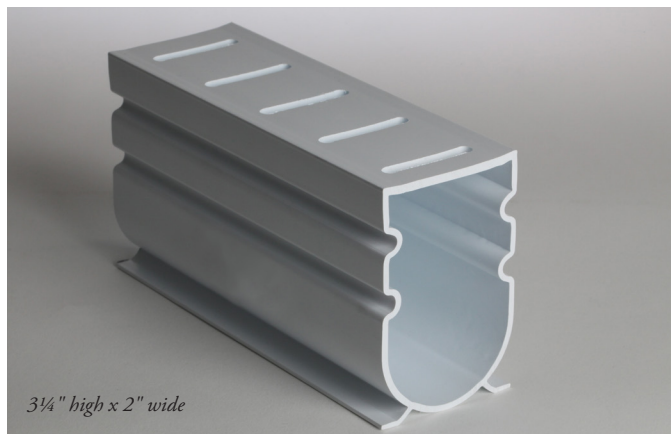
- Heavy wall, bondable, drain system and all components are made from rigid PVC, proven in years of outdoor applications with lasting beauty.
- Adapts to all standard 1½" plastic fittings.
- Joints bond together like PVC pipe, with PVC connectors supplied.
- Removable top for easy clean out.
- Drain offers heavier walls than existing systems, as well as greater rigidity and durability.
- Strong water volume capacity.
- Taped top for extra strength when peeling off after concrete is in place.
- Smooth concave top surface provides better drainage and minimizes collection of dirt and debris.



DECK DRAINS

QP-5171: 2" SQUARE DRAIN SYSTEM

U.S. Patent No. 6,729,795



Adaptable to standard 1 1/2" fittings and stands on its own feet for easy upright installation.

Not shown: End Cap (QP-5181-1 & 5182-1), and Surface clean-out plug (QP-988-1).

2" SQUARE DRAIN SYSTEM MODEL NUMBERS

Available Colors: white, gray, and tan (W,G,T)

ITEM NO.	LENGTH	PACKAGING
QP-5171 (W,G,T)	10 ft.	80 ft./case, eight 10-foot pcs.
QP-5171 (W,G,T) - 2	8 ft.	16 ft./case, two 8-foot pcs.
QP-5171 (W,G,T) - 4	8 ft.	32 ft./case, four 8-foot pcs.

Includes eight connectors (QP-5981-1), two surface clean-out plugs (QP-988-1), double-protective tape, and one instruction sheet.

2" SQUARE DRAIN SYSTEM FITTINGS

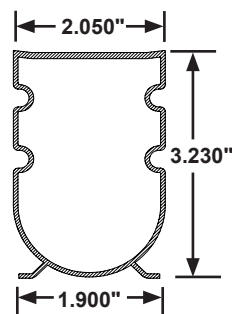
Available Colors: white, gray, and tan (W,G,T)

ITEM NO.	STYLE FITTING	PER CASE
QP-5172 (W,G,T)	45°	8
QP-5173 (W,G,T)	90°	8
QP-5174 (W,G,T)	Side Adapter	4
QP-5175 (W,G,T)	Bottom Drainout	4
QP-5176 (W,G,T)	Universal Tee	4
QP-5181-1*	End Cap, 3 1/8" length	1 pc.
QP-5182-1*	End Cap, 1" length	1 pc.
QP-988-1*	Surface Clean-out Plugs	1 pc.
QP-5981-1*	Connectors	1 pc.

*Available in WHITE ONLY

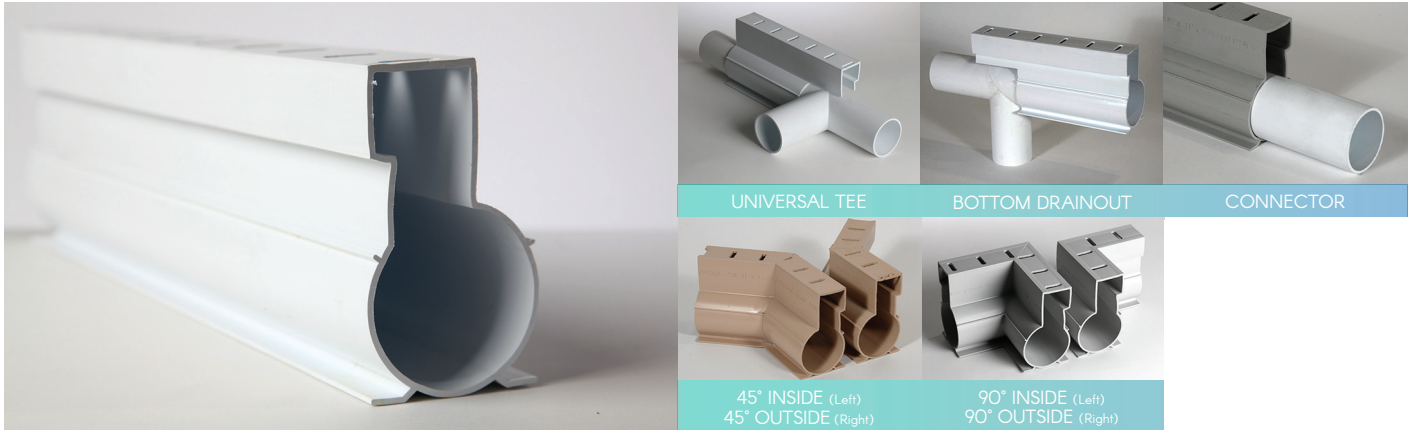
BENEFITS OF 2" SQUARE DRAIN SYSTEM

- Heavy wall, bondable, drain system and all components are made from rigid PVC, proven in years of outdoor applications with lasting beauty.
- Adapts to all standard 1 1/2" plastic fittings.
- Joints bond together like PVC pipe, with PVC connectors supplied.
- Clean-outs adapt to 1 1/2" threaded (purchased locally) or connector (supplied) for end clean-outs with either threaded or slip end cap.
- Should a surface clean-out hole be desired, simply drill a 1" hole and snap in our clean-out fitting. To clean, remove plug and flush with hose. There are two supplied in every carton.
- Drain offers heavier walls than existing systems, as well as greater rigidity and durability.
- Strong water volume capacity.
- Taped top for extra strength when peeling off after concrete is in place.
- Smooth concave top surface provides better drainage and minimizes collection of dirt and debris.



QP-3701: DECK DRAIN-A-WAY® SYSTEM II

U.S. Patent No. 4,490,067 Canada Patent No. 1,221,043



Adaptable to standard 1½" fittings and stands on its own feet for easy upright installation.

DECK DRAIN-A-WAY® SYSTEM II MODEL NUMBERS

Available Colors: white, gray, and tan (W,G,T)

ITEM NO.	LENGTH	PACKAGING
QP-3701 (W,G,T)	8 ft.	72 ft./case, nine 8-foot pcs.
QP-3701 (W,G,T) - 2	8 ft.	16 ft./case, two 8-foot pcs.
QP-3701 (W,G,T) - 4	8 ft.	32 ft./case, four 8-foot pcs.

Includes nine connectors (QT-125-1), two surface clean-out plugs (QP-988-1), double-protective tape, and one instruction sheet.

DECK DRAIN-A-WAY® SYSTEM II FITTINGS

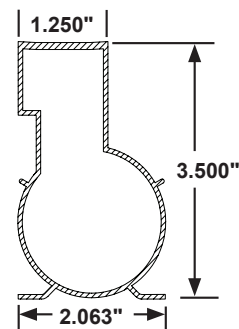
Available Colors: white, gray, and tan (W,G,T)

ITEM NO.	STYLE FITTING	PER CASE
QP-3702 (W,G,T)	45° Inside	4
QP-3703 (W,G,T)	45° Outside	4
QP-3704 (W,G,T)	90° Inside	4
QP-3705 (W,G,T)	90° Outside	4
QP-3706 (W,G,T)	Universal Tee	4
QP-3709 (W,G,T)	Bottom Drainout	4
QP-1031-1*	Top End Caps	1 pc.
QP-988-1*	Surface Clean-out Plugs	1 pc.
QT-125-1*	Connectors	1 pc.

*Available in WHITE ONLY

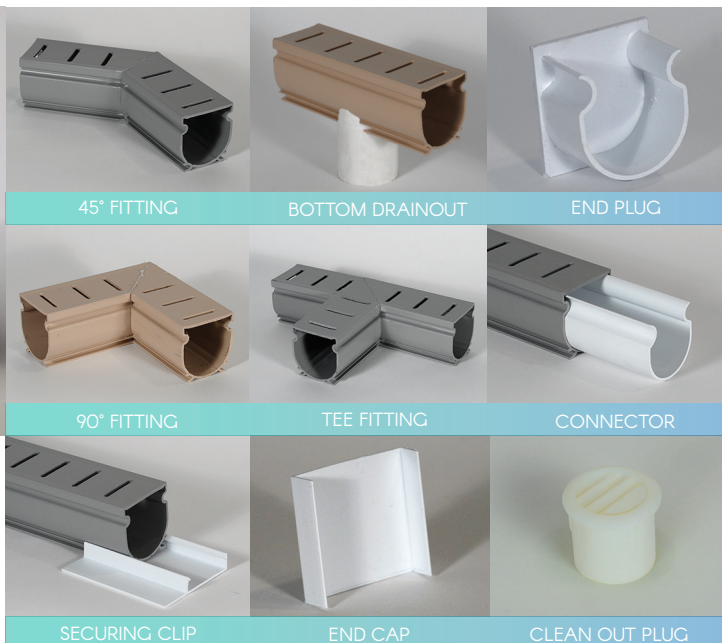
BENEFITS OF DECK DRAIN-A-WAY® SYSTEM II

- Heavy wall, bondable, drain system and all components are made from rigid PVC, proven in years of outdoor applications with lasting beauty.
- Adapts to all standard 1½" plastic fittings.
- Joints bond together like PVC pipe, with PVC connectors supplied.
- Clean-outs adapt to 1½" threaded (purchased locally) or connector (supplied) for end clean-outs with either threaded or slip end cap.
- Should a surface clean-out hole be desired, simply drill a 1" hole and snap in our clean-out fitting. To clean, remove plug and flush with hose. There are two supplied in every carton.
- Drain offers heavier walls than existing systems, as well as greater rigidity and durability.
- Strong water volume capacity.
- Taped top for extra strength when peeling off after concrete is in place.
- Smooth concave top surface provides better drainage and minimizes collection of dirt and debris.



DECK DRAINS

QP-6401: 2" PAVER DRAIN



PAVER DRAIN MODEL NUMBERS

Available Colors: white, gray, and tan (W,G,T)

ITEM NO.	LENGTH	PACKAGING
QP-6401 (W,G,T)	10 ft.	80 ft./case, eight 10-foot pcs.
QP-6401 (W,G,T) - 2	8 ft.	16 ft./case, two 8-foot pcs.
QP-6401 (W,G,T) - 4	8 ft.	32 ft./case, four 8-foot pcs.

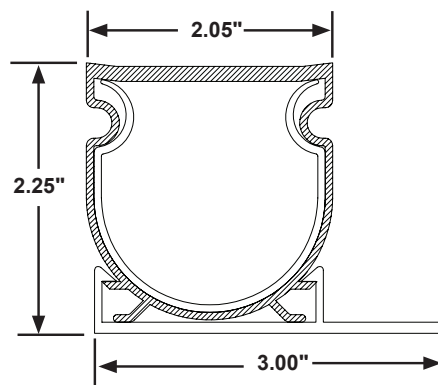
Includes eight connectors (QP-6411-1 or QP-6413-1), 48 securing clips (QP-1003), double-protective tape, and instruction sheet.

PAVER DRAIN FITTINGS

Available Colors: white, gray, and tan (W,G,T)

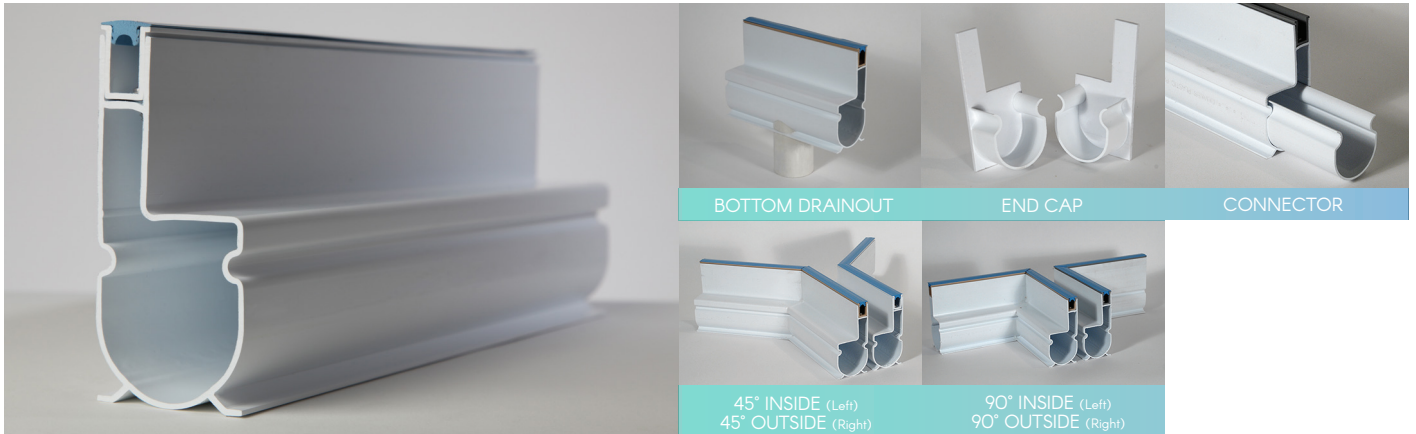
ITEM NO.	STYLE FITTING	PER CASE
QP-6402 (W,G,T)	45°	10
QP-6403 (W,G,T)	90°	10
QP-6404 (W,G,T)	Bottom Drainout	4
QP-6405	End Plug (white only)	4
QP-6406 (W,G,T)	Tee Fitting	4
QP-1003	Securing Clips (white only)	48
QP-6411-1	Connector (gray)	1 pc.
QP-6413-1	Connector (white)	1 pc.
QP-5183-1	End Cap (white only)	1 pc.
QP-988-1	Clean Out Plug (white only)	1 pc.

- 2 $\frac{3}{8}$ " Paver Height - designed for standard pavers.
- Tan, gray and white - three designer colors to match the latest paver styles.
- Securing clips - packaged complete with 48 clips for locking underneath pavers. Alternate side-to-side or all on one side to fit flush with walls.
- Concave top - ensures superior drainage, minimizes debris collection.
- Ready to install - includes eight connectors, securing clips (six per 10' length), protective tape, and instruction sheet.
- Adapts to all standard 1 $\frac{1}{2}$ " plastic fittings.



BOTTOM WIDTH INCLUDES SECURING CLIP.
ALL DIMENSIONS ARE NOMINAL.

QP-7201: STREAMLINE | LOW PROFILE DRAIN



STREAMLINE MODEL NUMBERS

Available Colors: white, gray, and tan (W,G,T)

ITEM NO.	LENGTH	PACKAGING
QP-7201 (W,G,T)	8 ft.	48 ft./case, six 8-foot pcs.
QP-7201 (W,G,T) - 2	8 ft.	16 ft./case, two 8-foot pcs.
QP-7201 (W,G,T) - 4	8 ft.	32 ft./case, four 8-foot pcs.

Case includes 6 connectors and instruction sheet.

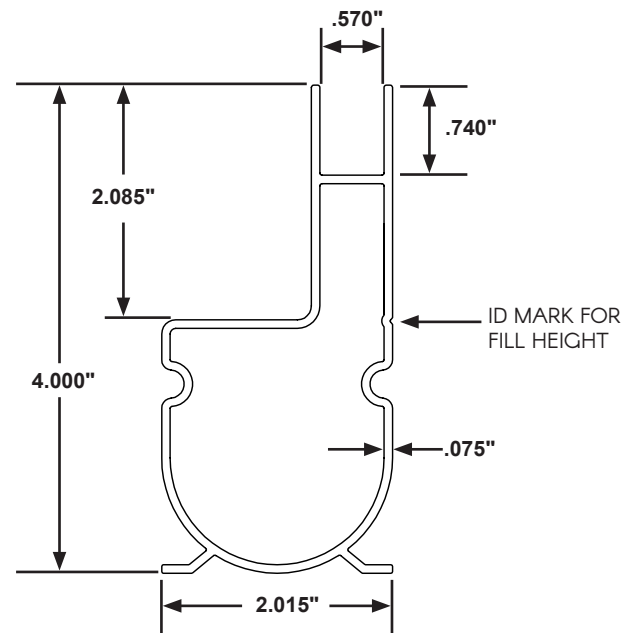
STREAMLINE FITTINGS

Available Colors: white, gray, and tan (W,G,T)

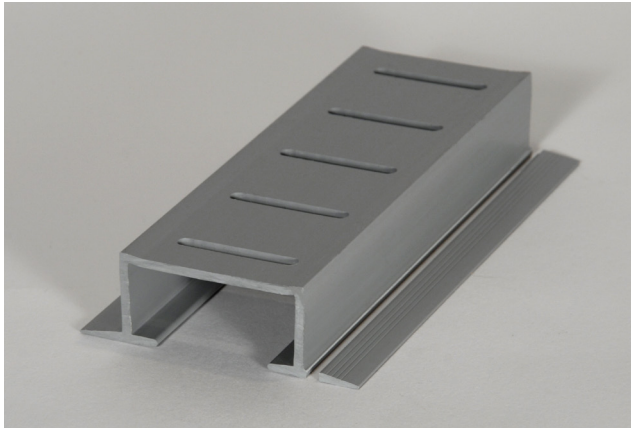
ITEM NO.	STYLE FITTING	PER CASE
QP-7202 (W,G,T)	45° Inside Corner	2
QP-7203 (W,G,T)	45° Outside Corner	2
QP-7204 (W,G,T)	90° Inside Corner	2
QP-7205 (W,G,T)	90° Outside Corner	2
QP-7206 (W,G,T)	Bottom Drainout	2
QP-7207	End Cap - (1 left, 1 right)	2
QP-6413-1	Connector (white)	1

Streamline is the unique drain from Quaker Plastics. With its slim opening, Streamline blends seamlessly into the most elegant patio or deck.

- Visible entry channel only ½" wide.
- Recyclable, protective, removable filler strip for installation, no tape/no residue.
- Designed for pavers and concrete decks.
- Available in white, gray, and tan.
- Adapts to all standard 1½" plastic fittings.



QP-6611: 1" PAVER OVERLAY



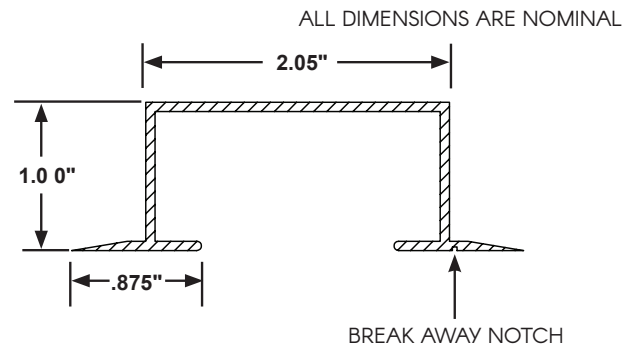
The 1" Paver Overlay is perfect for renovation.

1" PAVER OVERLAY MODEL NUMBERS

Available Colors: white, gray, and tan (W,G,T)

ITEM NO.	LENGTH	PACKAGING
QP-6611W (white)	5 ft.	100 ft./case, twenty 5-foot pcs.
QP-6611G (gray)	5 ft.	100 ft./case, twenty 5-foot pcs.
QP-6611T (tan)	5 ft.	100 ft./case, twenty 5-foot pcs.

Includes Double-protective tape and one instruction sheet.



One-inch Paver Overlay is perfect for renovating an old, damaged deck. The overlay is easily installed on top of the old drain between the new surface paver stones, blending seamlessly with your landscape projects. Considerable expense is avoided in digging up old drain and replacing with a new system. Simpler and less time-consuming than replacement caps.

- Twenty (20) 5-foot lengths (100 ft./case).
- One side of overlay is notched for easy break-a-way for use against flat surfaces.
- Available in white, gray, and tan.
- UPS able carton.

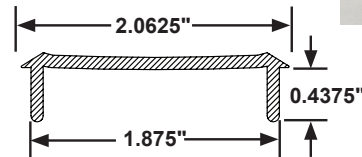
QP-595: REPLACEMENT CAP FOR QUAKER DECK DRAIN

REPLACEMENT CAP FOR QUAKER DECK DRAIN MODEL NUMBERS

Available Colors: white, gray, and tan (W,G,T)

ITEM NO.	LENGTH	PACKAGING
QP-595 (W,G,T)	5 ft.	100 ft./case, twenty 5-foot pcs.

Ideal to repair common 2" drain systems. Fits Quaker's 2" Square Drain (QP-5171). Simply saw out damaged area, insert replacement drain top, and bond it in place.



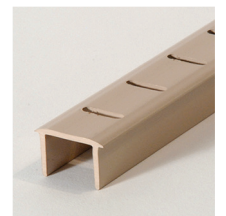
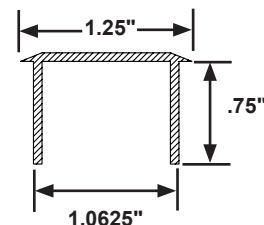
QP-2551: REPLACEMENT CAP FOR COMMON DECK DRAIN

REPLACEMENT CAP FOR COMMON DECK DRAIN MODEL NUMBER

Available Colors: white, gray, and tan (W,G,T)

ITEM NO.	LENGTH	PACKAGING
QP-2551 (W,G,T)	4 ft.	96 ft./case, twenty four 4-foot pcs.

Ideal to repair commonly used drain systems. Fits Quaker's Deck Drain-A-Way® (QP-3701). Simply saw out damaged area and insert Quaker's replacement drain top and bond it in place.



QP-781: ARROWHEAD™ CONTROL JOINT

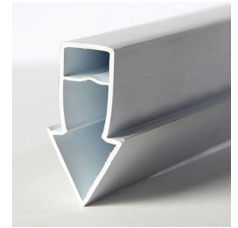
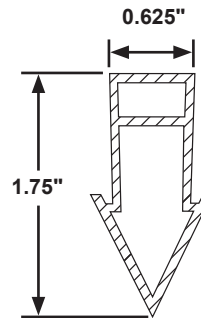
U.S. Patent No. 4,548,009

ARROWHEAD™ CONTROL JOINT MODEL NUMBERS

Available Colors: white, gray, and tan (W,G,T)

ITEM NO.	LENGTH	PACKAGING
QP-781 (W,G,T)	12 ft.	240 ft./case, twenty 12-foot pcs.

Unique arrow-shape presses easily into concrete - no channels to obstruct installation. Locks into concrete with minimum water seepage. A layer of peel off tape protects the top during installation.



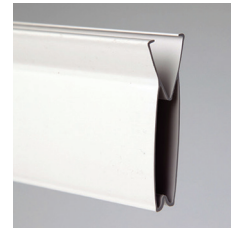
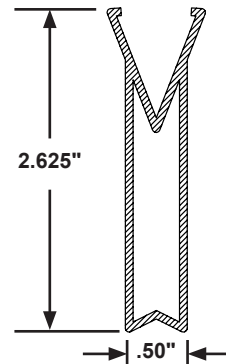
QP-971: ARROWHEAD™ CONTROL JOINT EXTENSION BASE

ARROWHEAD™ CONTROL JOINT EXTENSION BASE MODEL NUMBERS

Available in White Only

ITEM NO.	LENGTH	PACKAGING
QP-971	12 ft.	192 ft./case, sixteen 12-foot pcs.

Used when a full expansion, as well as contractual joint, is needed. Simply snap the control joint (QP-781) and base together to meet this requirement.



QP-2571W1: ARROWHEAD™ ACCENT STRIP

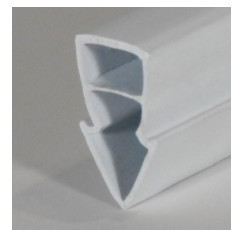
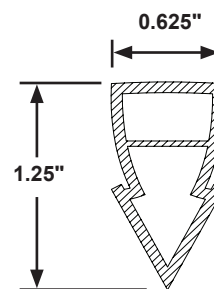
U.S. Patent No. 4,548,009

ARROWHEAD™ ACCENT STRIP MODEL NUMBERS

Available Colors: white, gray, and tan (W,G,T)

ITEM NO.	LENGTH	PACKAGING
QP-2571W1 (W,G,T)	12 ft.	240 ft./case, twenty 12-foot pcs.

Use Accent Strip where true expansion joint is not required to provide a decorative trim or pattern in poured concrete. A layer of peel off tape protects the top during installation.



DISCHARGE HOSE AND LINER LOCKS

QT-131, 132, 133, 261, 262: HEAVY DUTY DISCHARGE HOSE

HEAVY DUTY DISCHARGE HOSE MODEL NUMBERS		
ITEM NO.	LENGTH	ROLLS PER CASE
QT-131*	1½" x 25' with clamp	6
QT-132*	1½" x 50' with clamp	6
QT-133	1½" x 200' without clamp	1
QT-261	2" x 200' without clamp	1
QT-262*	2" x 50' with clamp	5

* Available in shrink-wrap packaging.

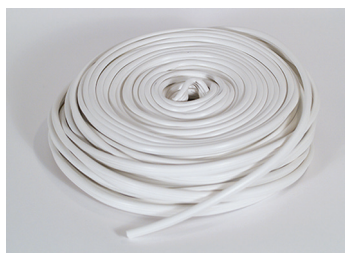
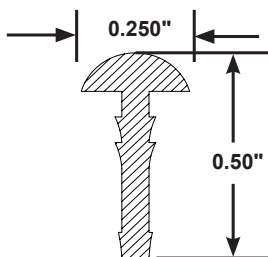
- Highest quality vinyl discharge hose, 20% thicker than the competition.
- Most popular sizes are shrink-wrapped in retail-friendly packaging for best shelf visibility and easier handling.
- Stainless steel clamp included with retail-size rolls.
- Color-coded for easy identification and convenient inventorying.
- Highest quality made in America.



LINER BEAD WEDGE LOCK

LINER BEAD WEDGE LOCK MODEL NUMBERS			
ITEM NO.	LENGTH	COLOR	PACKAGING
QP-1561	1500 ft.	White	1 spool
QP-1562	120 ft. per bag	White	12 bags per box
QP-1564	120 ft. per bag	Blue	12 bags per box
QP-1566	120 ft. per bag	Black	12 bags per box
QP-1568	120 ft. per bag	Gray	12 bags per box

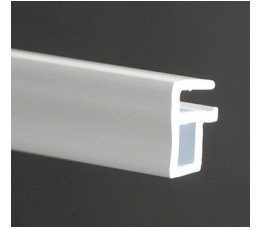
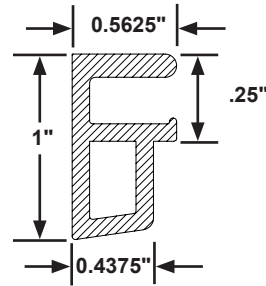
High-quality flexible vinyl designed as a wedge (or shim) to secure liner bead to coping track. Available in white, blue, black, and gray.



QP-521: SIDE MOUNT LINER TRACK

SIDE MOUNT LINER TRACK MODEL NUMBER		
ITEM NO.	LENGTH	PACKAGING
QP-521	8 ft.	400 ft./case, fifty 8-foot pcs.

Mounts on the side of pool walls to hold liner securely. Ideal for pools in which coping cannot be easily removed or for installing liners in concrete pools. White PVC.

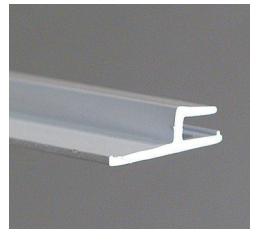
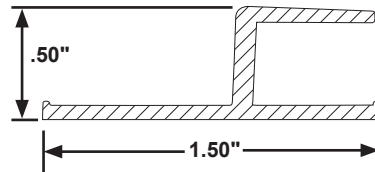


ALL DIMENSIONS ARE NOMINAL

QP-531: TOP MOUNT LINER TRACK

TOP MOUNT LINER TRACK MODEL NUMBER		
ITEM NO.	LENGTH	PACKAGING
QP-531	8 ft.	512 ft./case, sixty four 8-foot pcs.

Ideal for new pools or installing a liner in a pool with easily removable coping or with broken coping. Install Top Mount Liner Track on top of the pool wall to hold liner securely. White PVC.

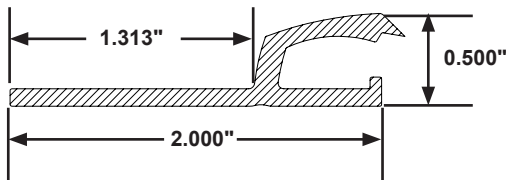


ALL DIMENSIONS ARE NOMINAL

QP-2022: TOP MOUNT RADIUS CUT LINER TRACK

TOP MOUNT LINER TRACK MODEL NUMBER		
ITEM NO.	LENGTH	PACKAGING
QP-2022	8 ft.	208 ft./case, twenty six 8-foot pcs.

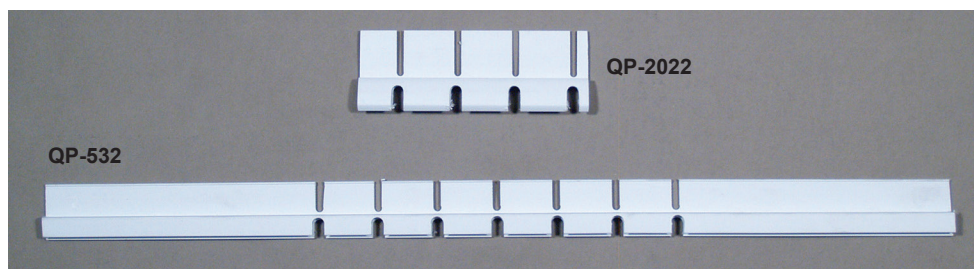
For use in free-form vinyl liner pools. Conforms to pool radius. White PVC.



QP-532: 6" RADIUS CORNER FOR TOP MOUNT LINER TRACK

TOP MOUNT LINER TRACK MODEL NUMBERS		
ITEM NO.	LENGTH	PACKAGING
QP-532	24 in.	set of four 24 in. pcs.

Perfectly matches Top Mount Liner Track (QP-531). These pre-notched corner lengths are easily shaped by hand to form any corner up to a 6" radius. White PVC.

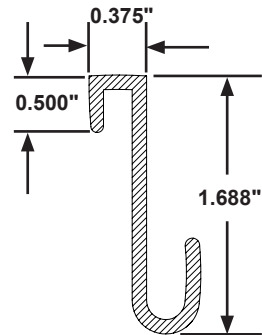


LINER HANGERS

QP-2581: ABOVE GROUND POOL REPLACEMENT LINER HANGER

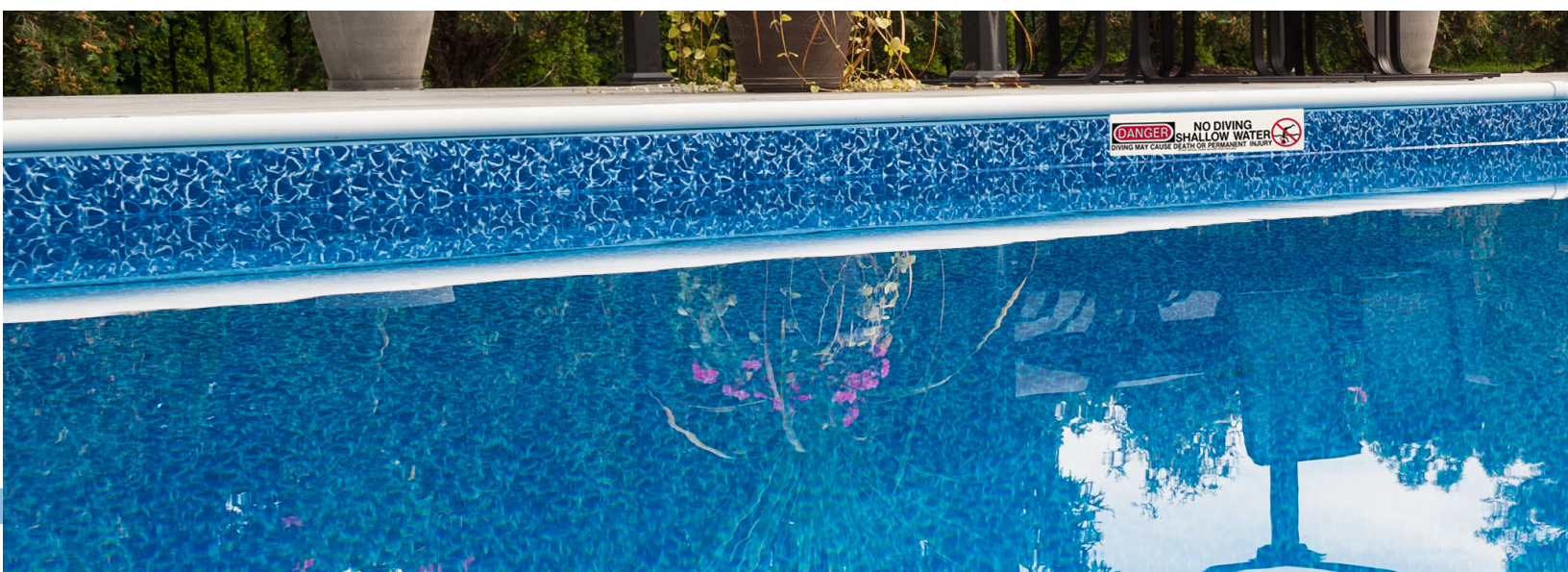
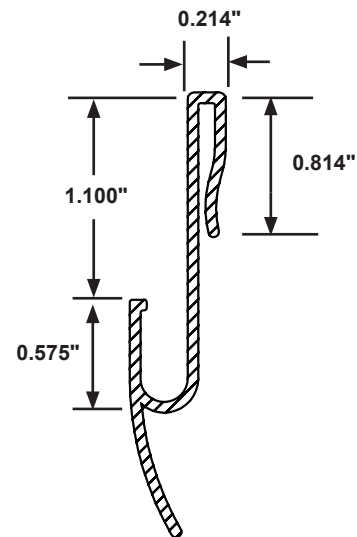
ABOVE GROUND POOL REPLACEMENT LINER HANGER		
ITEM NO.	LENGTH	PACKAGING
QP-2581	56 in.	266 ft./case, fifty seven 56 in. pcs.

Hanger fits on top of pool walls to provide a liner bead receiver. Liners fit better with fewer or no wrinkles, conforms to pool interior. Easy to change liners, no need to disassemble pool. White PVC.



QP-7141: DELUXE ABOVE GROUND POOL REPLACEMENT LINER HANGER

DELUXE ABOVE GROUND POOL REPLACEMENT LINER HANGER		
ITEM NO.	LENGTH	PACKAGING
QP-7141	56.5 in.	188 ft./case, forty 56.6\" in. pcs.



QP-2681: CERAMIC TILE HOLDER FOR NEW POOLS

CERAMIC TILE HOLDER MODEL NUMBER		
ITEM NO.	LENGTH	PACKAGING
QP-2681	6 ft.	120 ft./case, twenty 6-foot pcs.

You can create the elegant look of a higher cost pool just by adding real tile to an ordinary vinyl liner pool built with Quaker's patented tile/coping system. Practical, as well as stylish, real tile protects the vinyl from ultraviolet deterioration that is so common in the Sunbelt.

This unique system has been tested for over thirty years on hundreds of pools and has withstood the harsh winters of the Northeast with amazing durability. Frost proof tiles are available from local tile distributors. Accommodates a 6" x 6" tile. White PVC.



QP-3162: SIGN HOLDER WITH "NO DIVING" SIGNAGE

SIGN HOLDER WITH "NO DIVING" SIGN MODEL NUMBER		
ITEM NO.	LENGTH	PACKAGING
QP-3162	3½" h x 16¾"w	200 sign holders with sign affixed per case
QP-3162-1	3½" h x 16¾"w	Single Piece



The white plastic sign holder is ideal to display "No Diving" signs in new or existing vinyl liner pools. Patented lock-in edge snaps in above the existing liner bead.

The Sign Holder can be easily inserted around the pool as recommended by pool manufacturers. Here's a simple, clean, effective, and low cost way to equip all pools with important safety signage.

